



When is our year?

An overview of the Linux Desktop

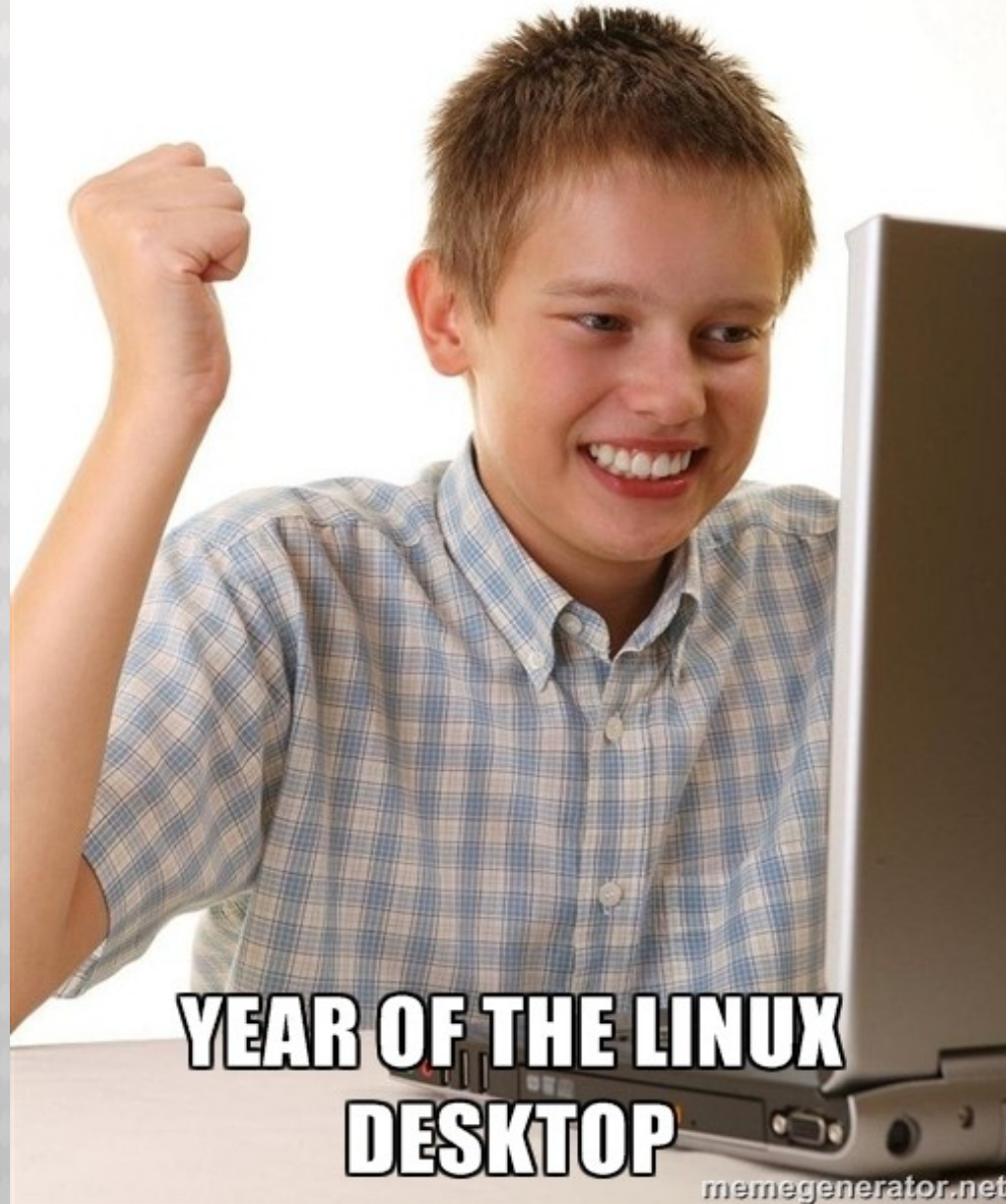
Presented by:

Levente Kurusa

Embedded Software Engineer
JW Technologies, AG.

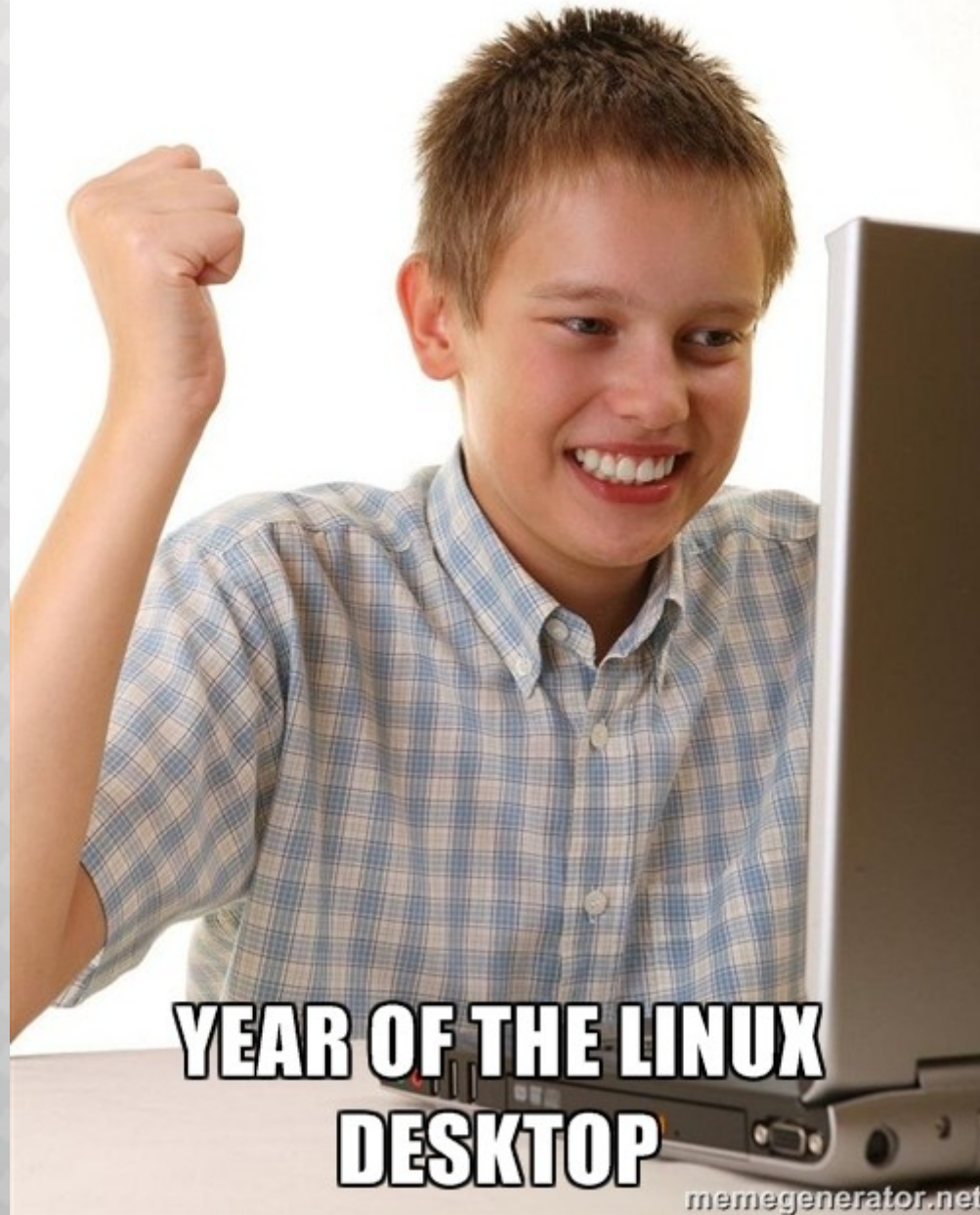
SCALE 13x :: February 21, 2015

2015



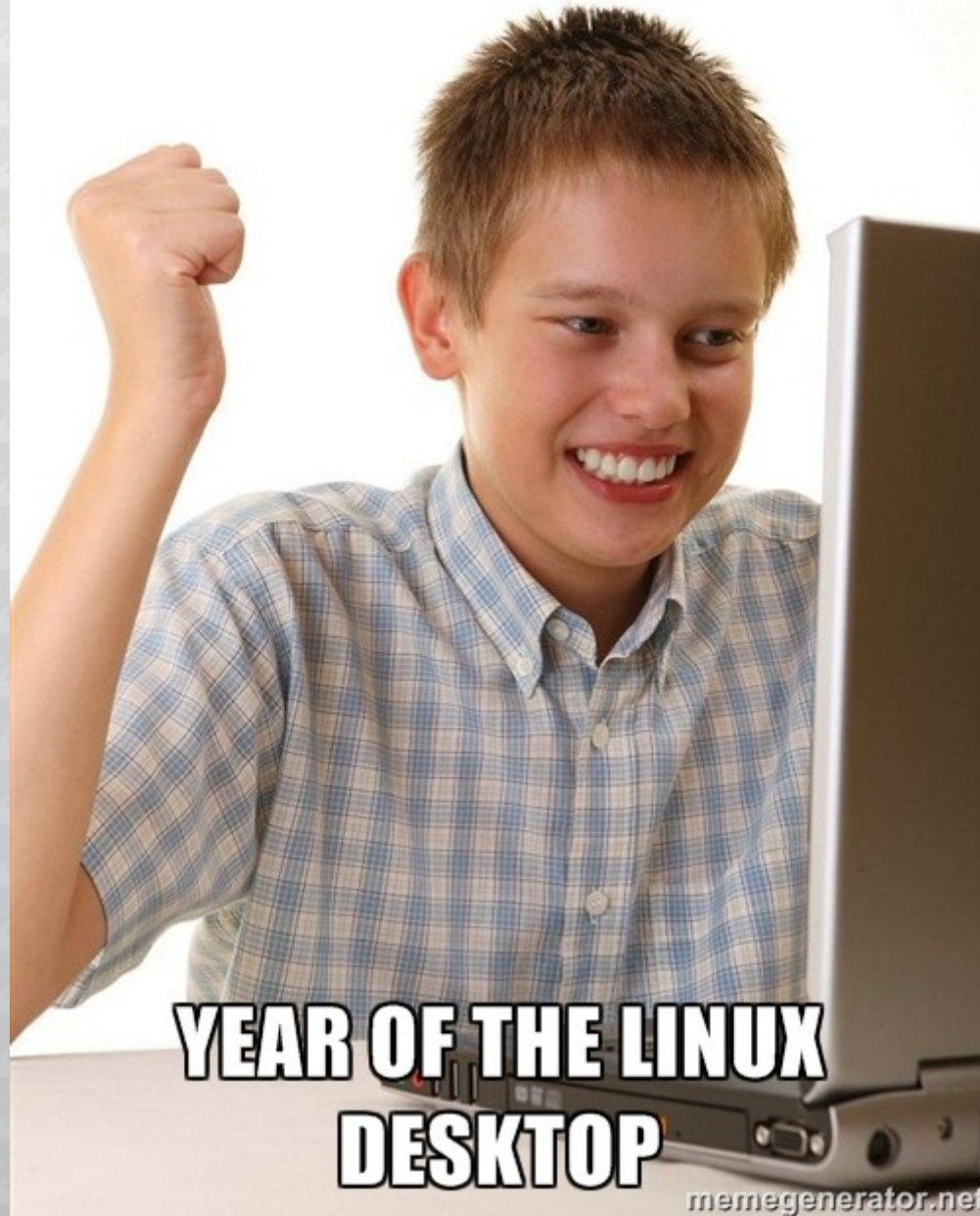
**YEAR OF THE LINUX
DESKTOP**

2014



**YEAR OF THE LINUX
DESKTOP**

2013



**YEAR OF THE LINUX
DESKTOP**



Who am I?

- # 18 year old computer hacker
- # 2014 summer intern at Red Hat
- # Fedora Ambassador
- # Kernel engineer
- ... actually anything low-level!
- # AOSP developer



- # Share my experiences as a Fedora Ambassador**
- # Let people know why I think the Linux Desktop is broken**



What is the “Linux Desktop”?

The kernel?

The community?

Do we really mean the “Desktop” as
in PCs and laptops?

Statistics regarding the Desktop



Desktop market share

56.26% Windows 7

18.26% Windows XP (still?)

13.52% Windows 8

05.26% Mac OS X

01.34% Linux

(data from www.netmarketshare.com)

The logo consists of a blue circle containing a white lowercase letter 'f'. A small 'TM' trademark symbol is located at the bottom right of the circle.

Distribution share

Linux Mint

Ubuntu

Debian

OpenSUSE

Fedora

Source: www.distrowatch.com



Mobile market share

84.04% Android

11.07% iOS

02.09% Windows Phone

02.80% Others

Source: www.idc.com

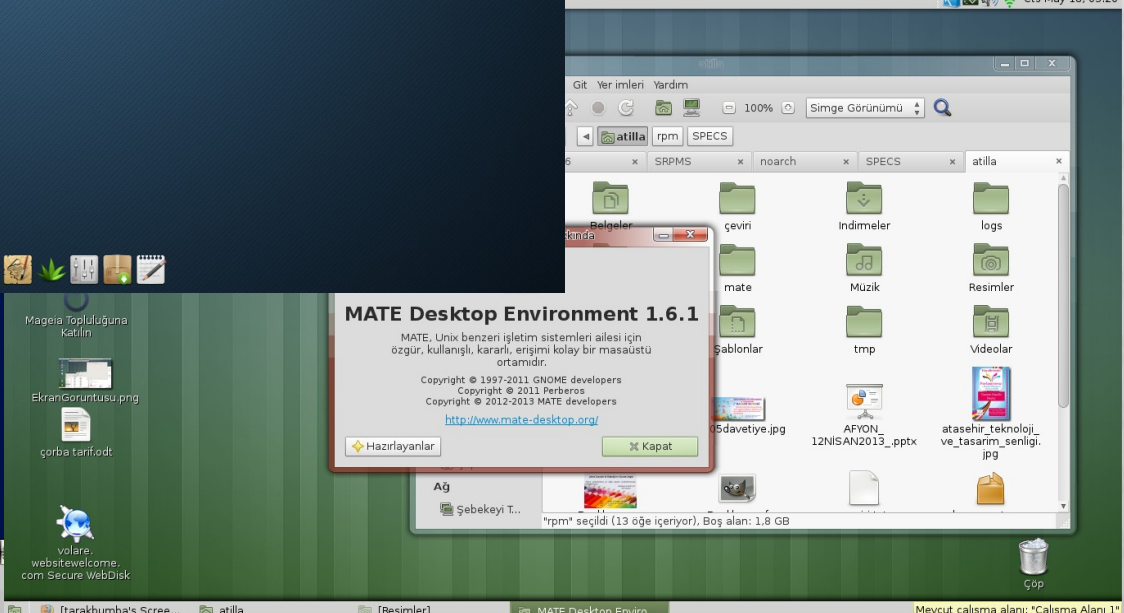
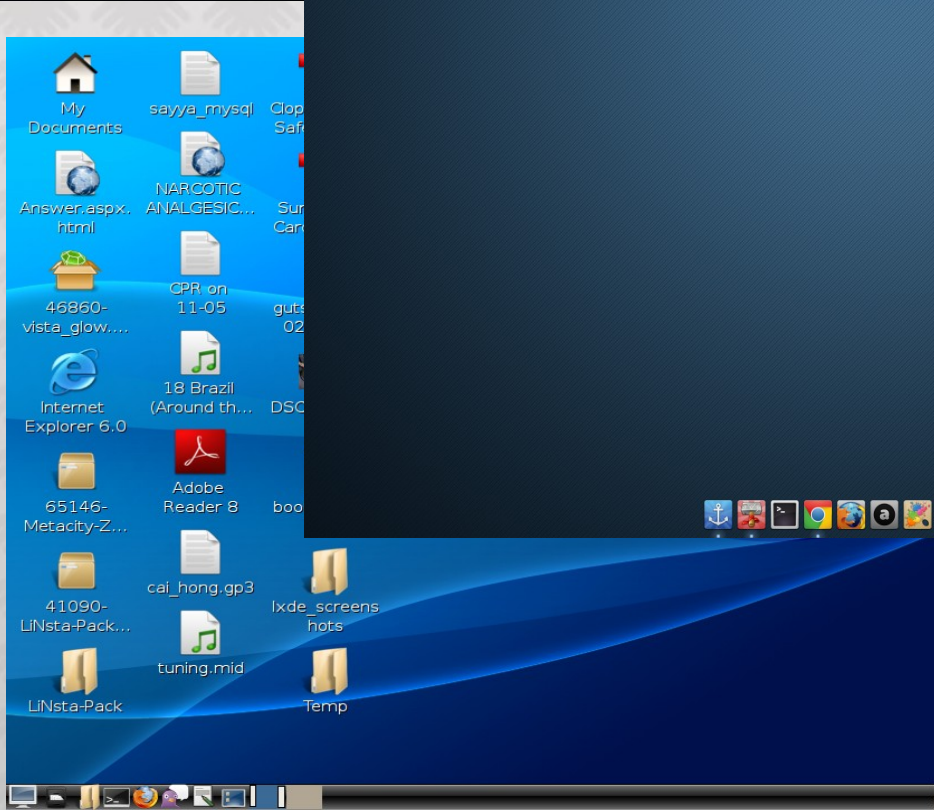
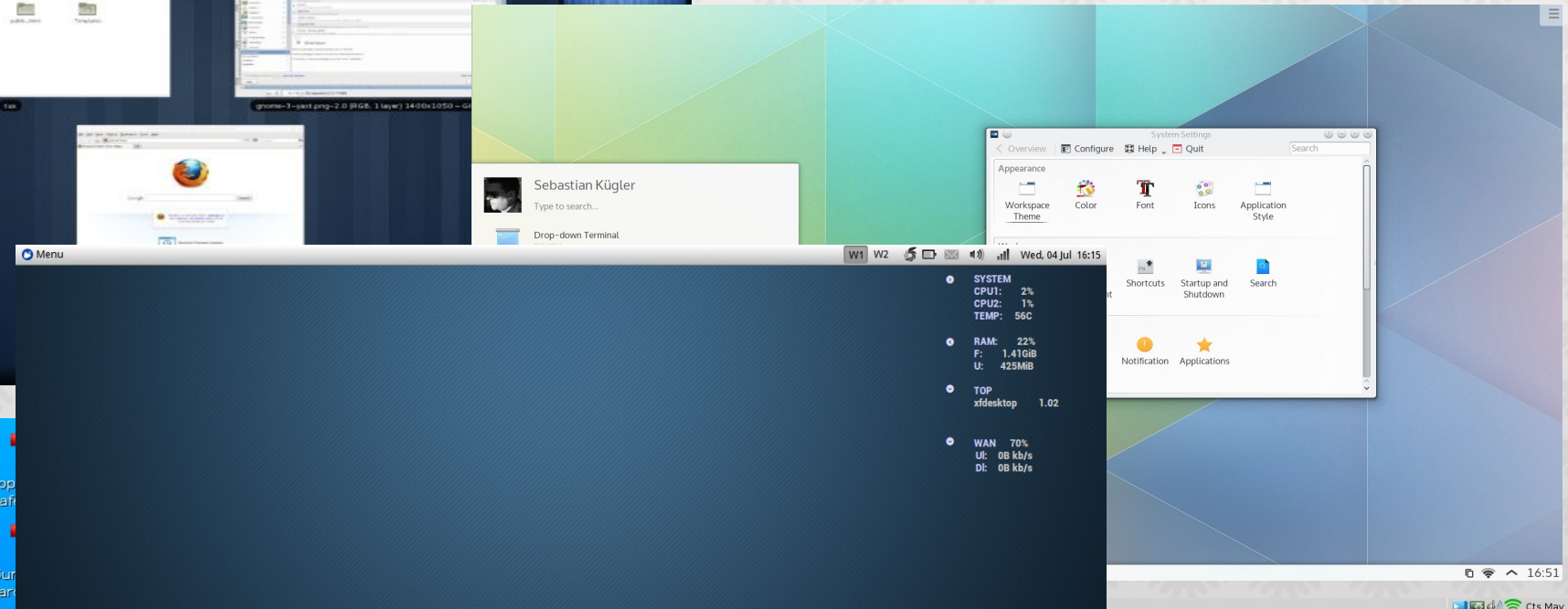
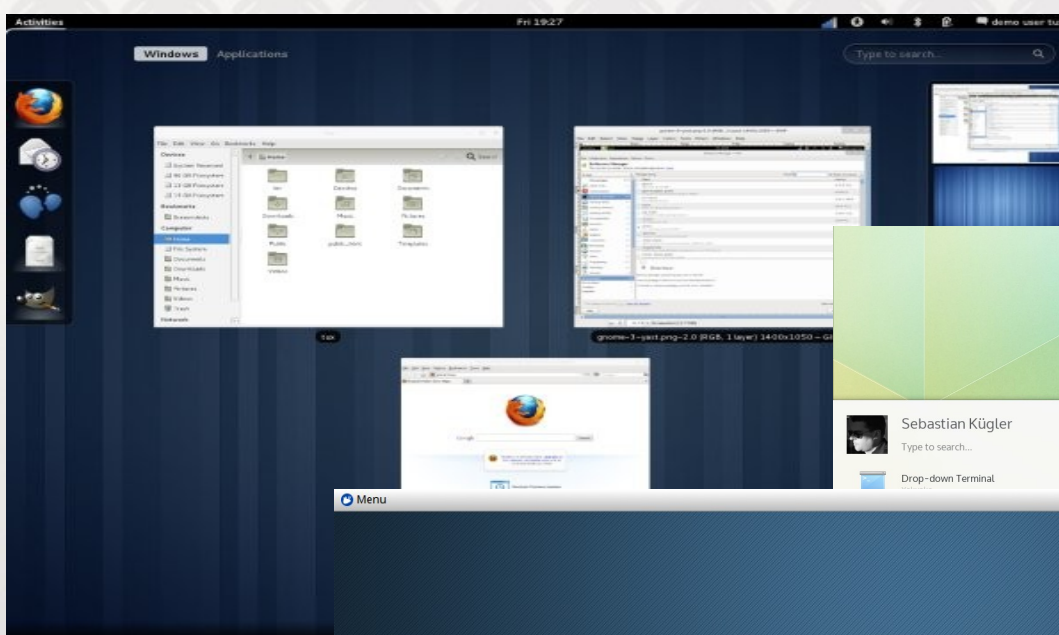
What can we learn from this?

We are doing something
wrong on the Desktop!

fedora 

Desktop environments





They are all different

*... and that's good
... or bad?*

fedora 



Configuration

Different configuration applications

Different settings!

(sometimes) they don't share them

Distributions





Distro problems

"yum install" on Ubuntu?

<package>-dev on Fedora?

How do I set up my Printers?



Distro problems

“ The efforts to standardize on a kernel and a set of core libraries were undermined by the Distro of the Day that held the position of power. ”

– Miguel de Icaza

**KERNEL FULLY SUPPORTS 4096
PROCESSOR SUPERCOMPUTER**

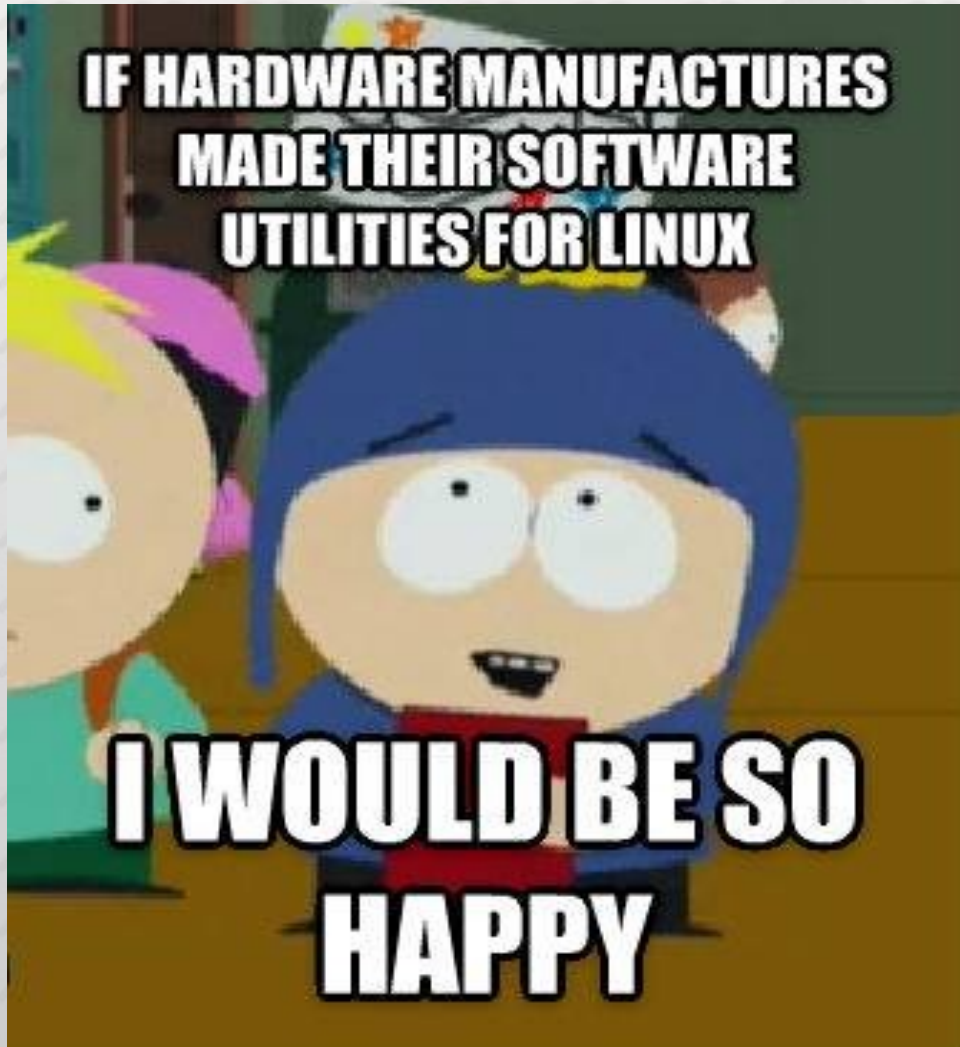
**LAPTOP HAS DIFFICULTY RETURNING
FROM SLEEP**

quickmeme.com



We miss the "It just works" moment

The kernel isn't helping us either



**IF HARDWARE MANUFACTURES
MADE THEIR SOFTWARE
UTILITIES FOR LINUX**

**I WOULD BE SO
HAPPY**



Backwards compatibility

Win32k

-----> Win98 apps still run on Win8!

-----> 18 years!

GTK and Qt aren't BWC



Rate of change

Windows updates its major version every 2-3 years (sometimes more)
=> No big changes in that time

Linux distros release more frequently
=> Possible big changes!

But we had good things happen to
us!

fedora ™



SteamOS

CryTek Engine

Unreal Engine 4.1



**# *nvidia* is now compatible with
bumblebee!**

**# Many, many improvements to GPU
drivers: performance, stability, etc.**

So, when is our year?

fedora 

Not soon.

fedora 



Questions?

Levente Kurusa

 levex@linux.com // levex@fedoraproject.org

 [@ilevex](https://twitter.com/ilevex)

 [+LeventeKurusa](https://plus.google.com/+LeventeKurusa)

 <http://ilevex.eu/>

SCALE 13x :: February 21, 2015 // Los Angeles, CA



Want more?

A huge list of problems: :-)

<http://tinyurl.com/LinuxProblems2015>